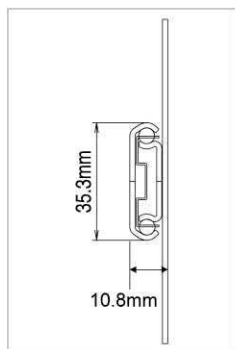


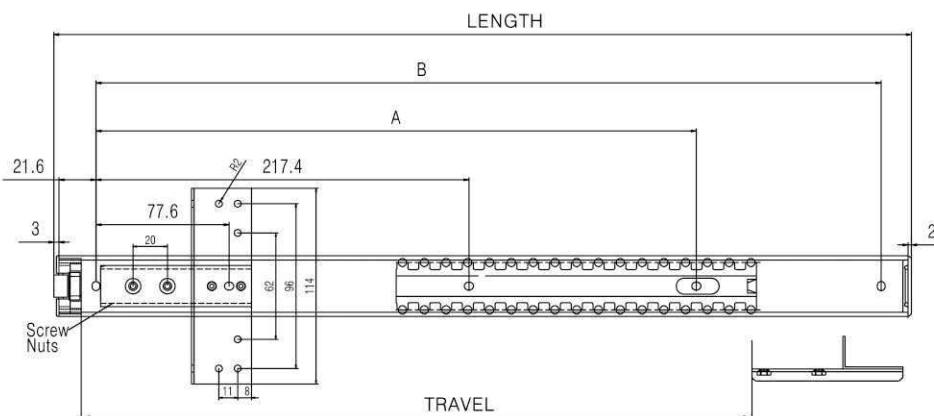
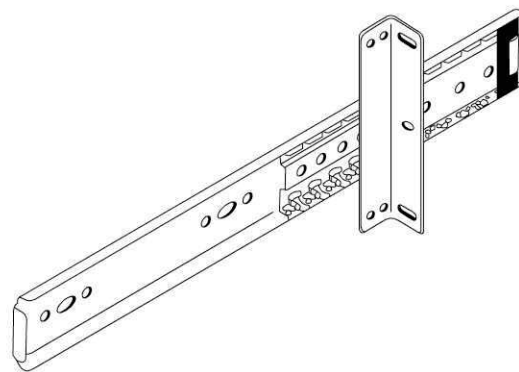
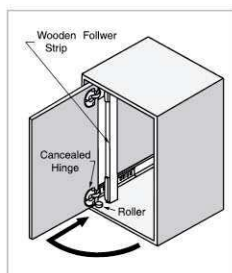
# POCKET DOOR SLIDES

Concealed Hinge Door Slide

P-101



(P-101)

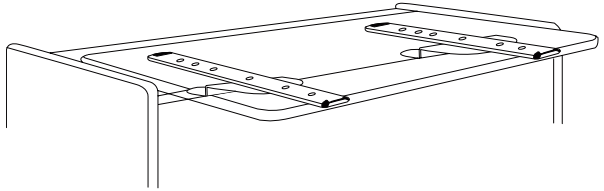
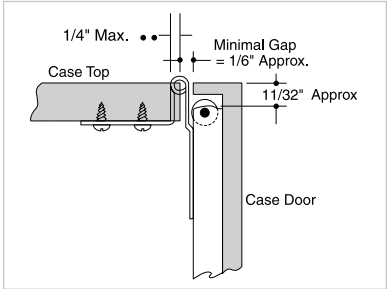
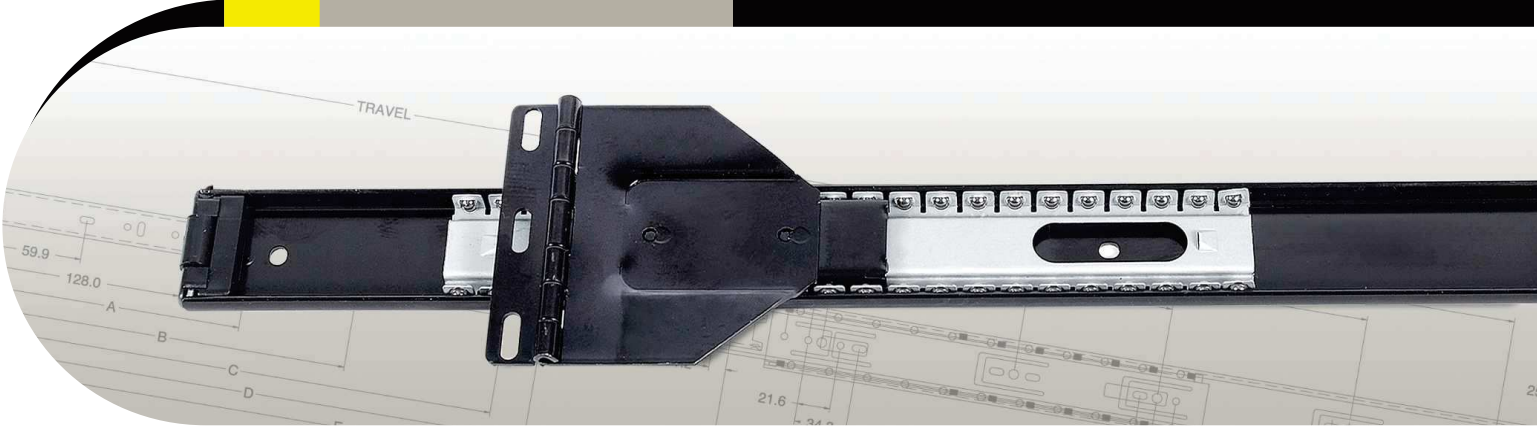


Slide Length (Inches)	Slide Length ±0.3mm	TRAVEL ±3mm	P-101 SERIES HOLE POSITIONS(mm)								Load Rating (kg/pair)
			A	B	C	D	E	F	G	H	
10"	254	141	-	211.8	-	-	-	-	-	-	*
12"	304.8	191	-	262.6	-	-	-	-	-	-	*
14"	355.6	241	-	313.4	-	-	-	-	-	-	*
16"	406.4	291	-	364.2	-	-	-	-	-	-	*
18"	457.2	341	278.4	415	-	-	-	-	-	-	*
20"	508	391	328.4	465.8	-	-	-	-	-	-	*
22"	558.8	441	378.4	516.6	-	-	-	-	-	-	*
24"	609.6	491	428.4	567.4	-	-	-	-	-	-	*
26"	660.4	541	478.4	618.2	-	-	-	-	-	-	*
28"	711.2	591	528.4	669	-	-	-	-	-	-	*

\*on request

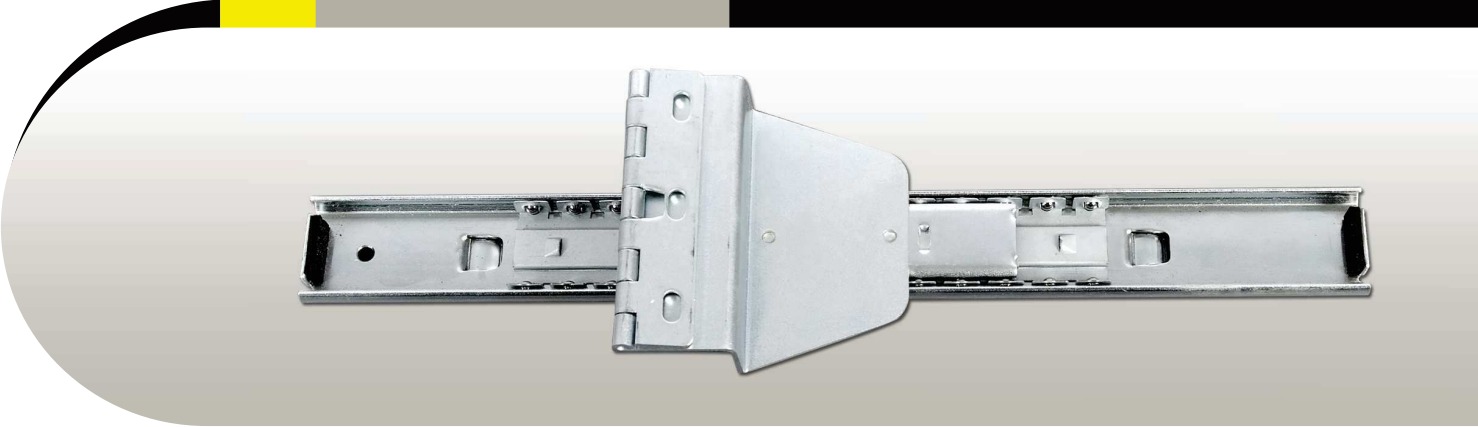
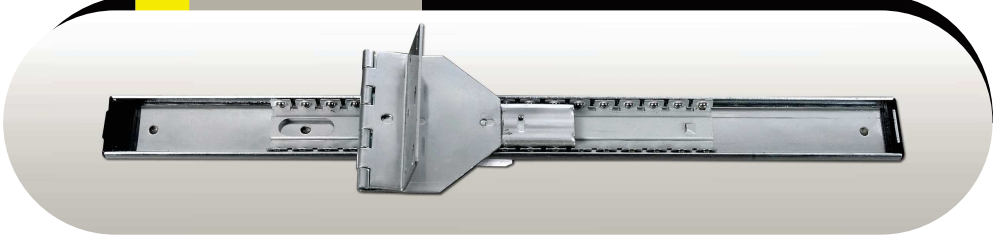
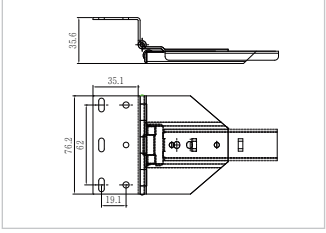
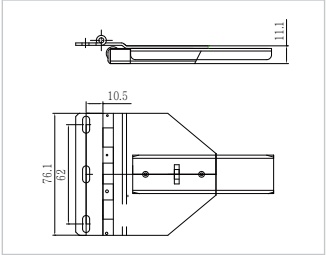
# FLIPPER DOOR SLIDES

Hinged Door Slide (Above Shelf) Medium-Duty, 3/4 Extension Slide  
Designed for 'Up and Over' Hinged Door Application



(FLIPPER DOOR SLIDES)

**\*On Request**



# CONCEALED HINGE - DOOR SLIDE

Medium-Duty, Precision Slide with a Selection of Hinges  
Option for Pivot Door Application

\*On Request

